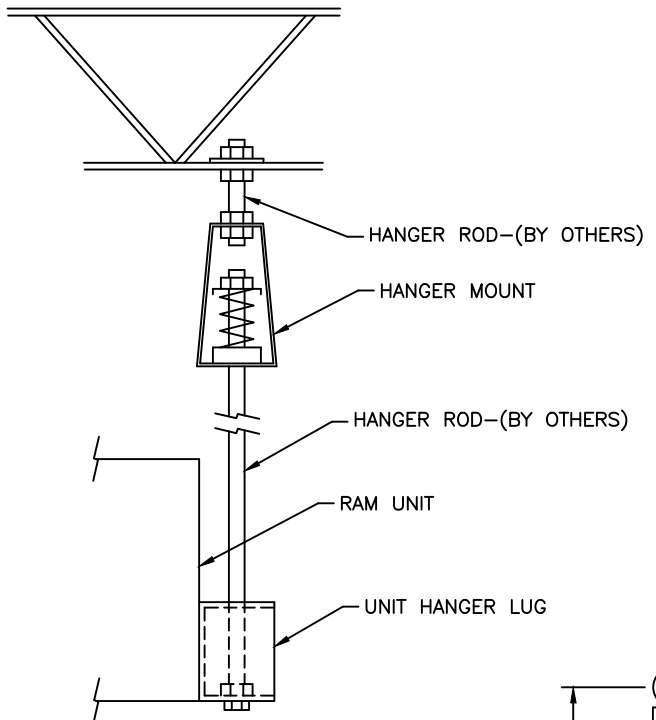
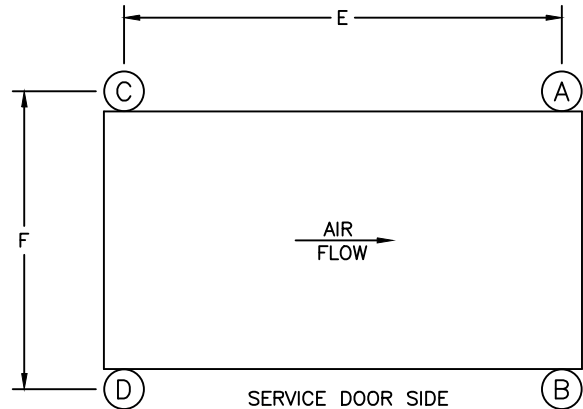


UNIT HANGER MOUNTING

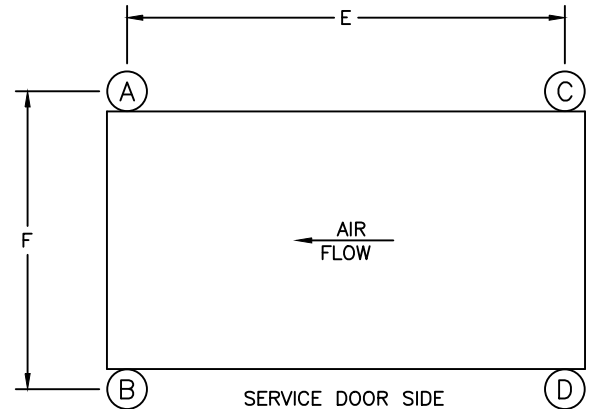


MODEL NO	A		B		C		D		E	F
	TYPE & SIZE	COLOR CODE	TYPE & SIZE	COLOR CODE	TYPE & SIZE	COLOR CODE	TYPE & SIZE	COLOR CODE		
9/10/12 AND 15	HS-A-200	BLACK	HS-A-310	YELLOW	HS-A-125	BROWN	HS-A-200	BLACK	67	49
18/20	HS-B-750	WHITE	HS-B-1000	BLUE	HS-B-750	WHITE	HS-B-1000	BLUE	77.75	63
22/25	HS-B-1000	BLUE	HS-B-1000	BLUE	NS-B-750	WHITE	HS-B-1000	BLUE	95.75	82
27/30	HS-C-1000	BLUE	HS-C-1350	YELLOW	HS-C-1350	YELLOW	HS-C-1750	1 BLACK 1 RED	95.75	91
33/36	HS-C-1350	YELLOW	HS-C-1750	1 BLACK 1 RED	HS-C-1350	YELLOW	HS-C-1350	YELLOW	115	93.75
218/220	HS-C-1000	BLUE	HS-C-1000	BLUE	HS-C-1000	BLUE	HS-C-1000	BLUE	77.75	110.25
222/225	HS-C-1750	1 BLACK 1 RED	HS-C-1750	1 BLACK 1 RED	HS-C-1350	YELLOW	HS-C-2100	1 YEL. 1 RED	95.75	149
227/230	HS-C-2100	1 YEL 1 RED	HS-C-2100	1 YEL 1 RED	HS-C-2100	1 YEL 1 RED	HS-C-2100	1 YEL 1 RED	95.75	159

TYPICAL "HS" UNIT HANGER MOUNTING

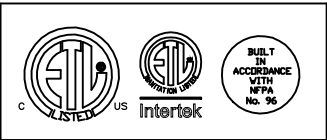


SERVICE DOOR SIDE
SPRING LOCATION
PLAN VIEW H1, H2 & H3



SERVICE DOOR SIDE
SPRING LOCATION
PLAN VIEW H4, H5 & H6

NOTES:
 -DIMENSIONS "E" & "F" ARE TO THE CENTERLINES OF THE SPRING LOCATIONS
 -SPRINGS ARE LOCATED ON INTAKE AND DISCHARGE ENDS ON RAM 33/36



RAM-9 THRU 230 HANGER ISOLATOR
 SIZE & LOCATION ARRANGEMENT H1 THRU H6